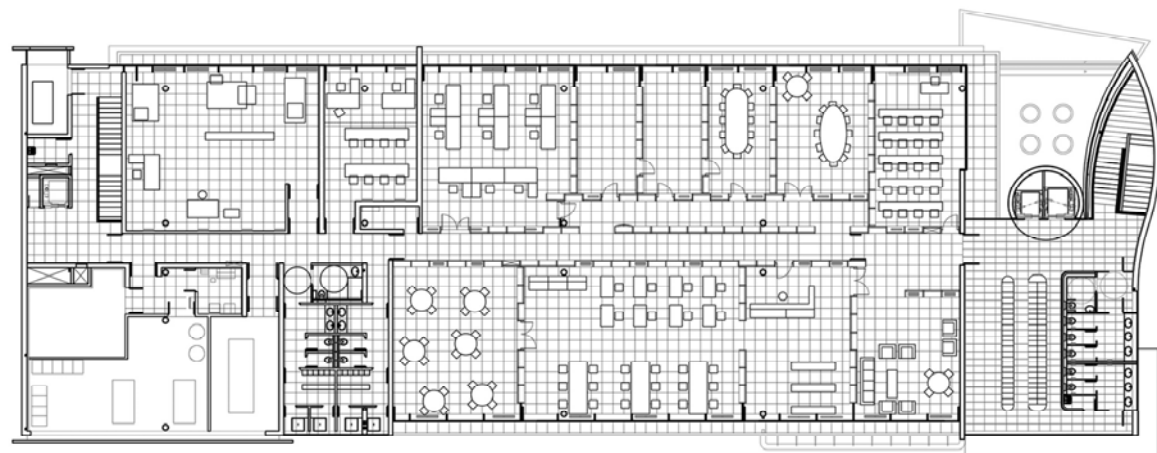
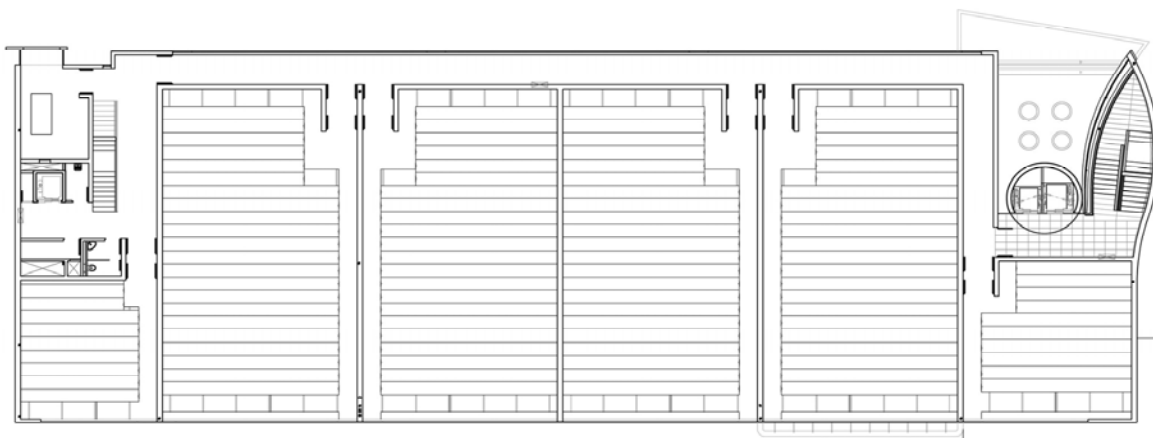


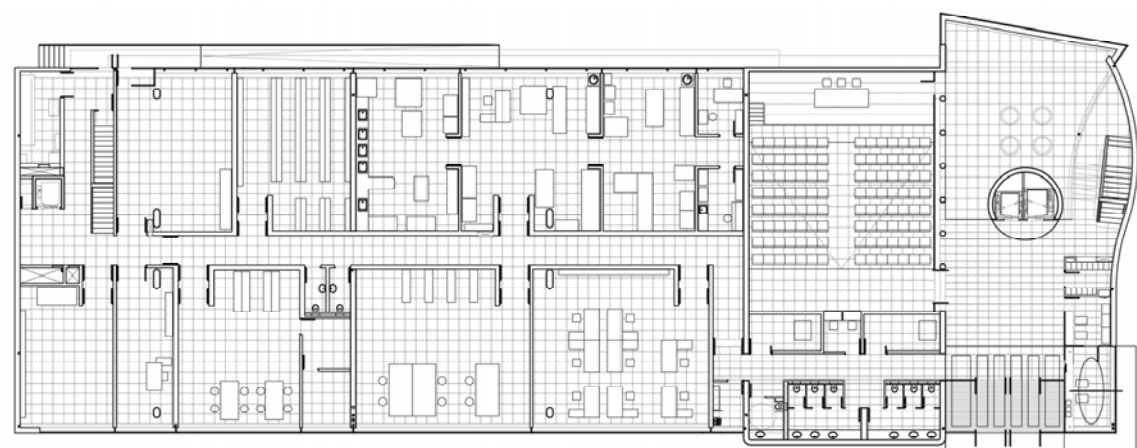
PLANTA DE CUBIERTAS/ ROOF FLOOR PLAN



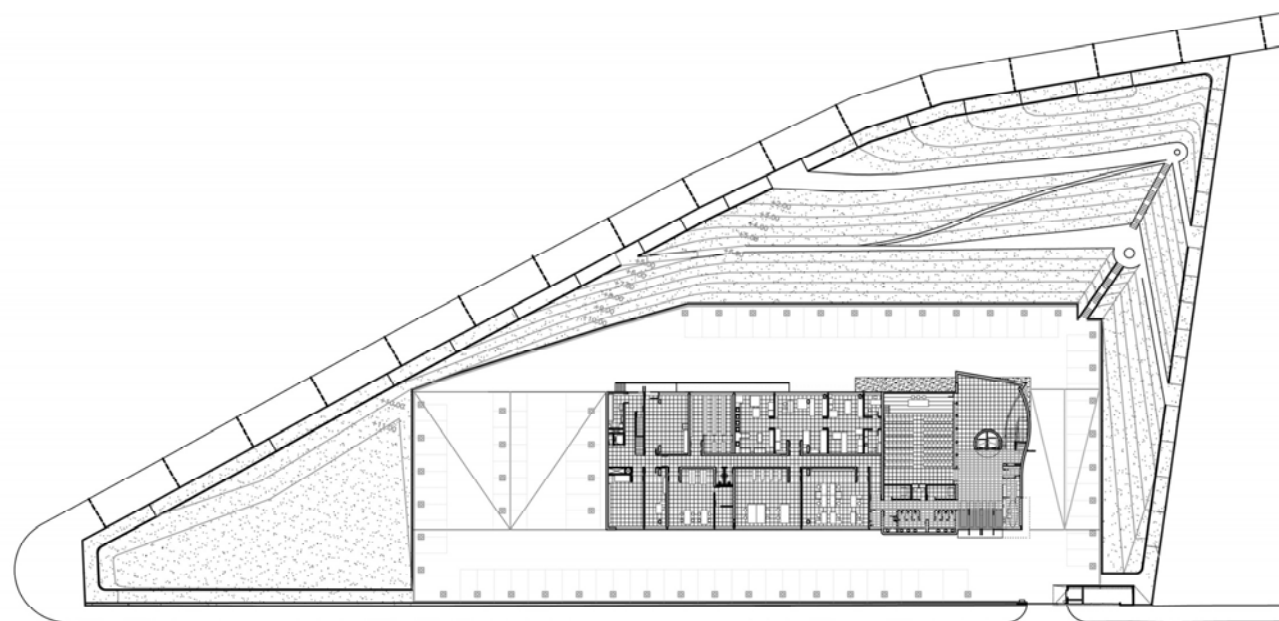
PLANTA TERCERA/ THIRD FLOOR PLAN



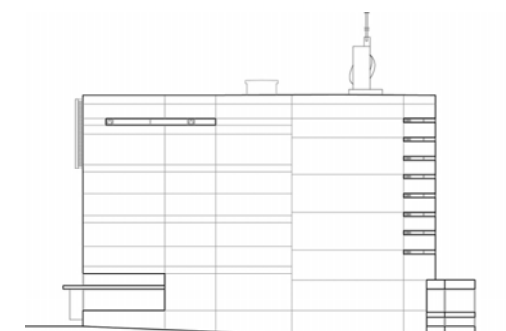
PLANTA PRIMERA/ FIRST FLOOR PLAN



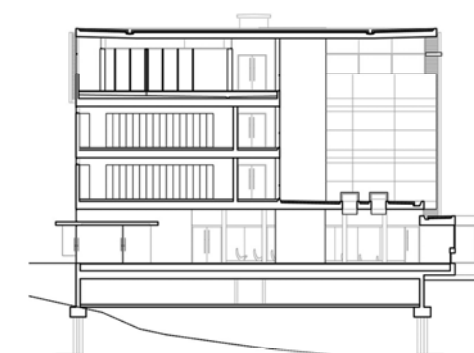
PLANTA BAJA/ GROUND FLOOR PLAN



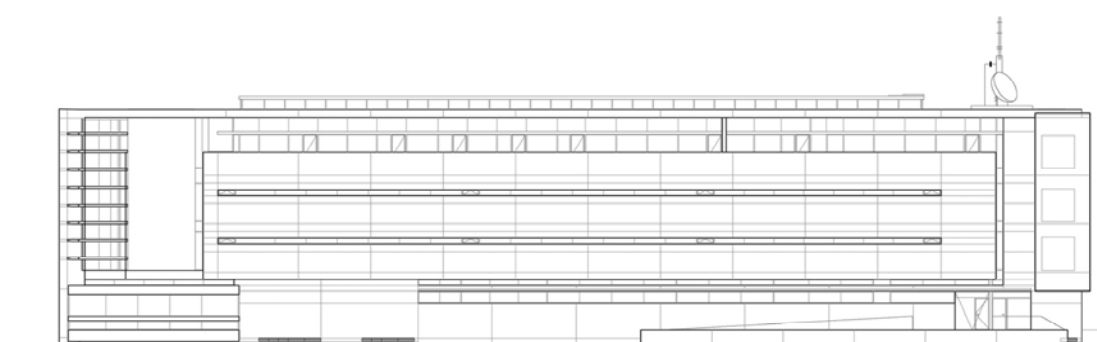
PLANTA DE SITUACION/ SITE PLAN



ALZADO OESTE/ WEST ELEVATION



SECCION TRANSVERSAL/ CROSS SECTION



ALZADO SUR/ SOUTH ELEVATION

ARCHIVO PUBLICO  
PUBLIC ARCHIVE

ARCHIVO GENERAL  
DE CANARIAS

2003

NEW  
HEADQUARTERS  
BUILDING FOR THE  
ARCHIVO GENERAL  
DE CANARIAS

LA LAGUNA  
TENERIFE

ANDRÉS PEREA  
ORTEGA  
ARQUITECTO

C/ Pintor Ribera  
nº22, 28016, Madrid  
SPAIN

+34 91 519 37 02  
+34 91 413 69 84  
aperea@pribera.com