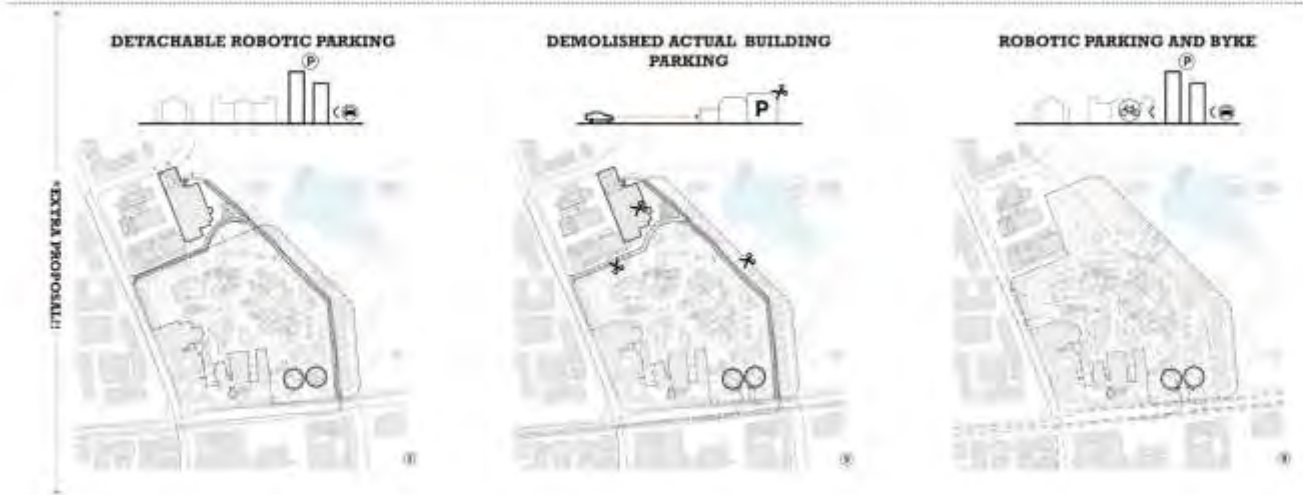
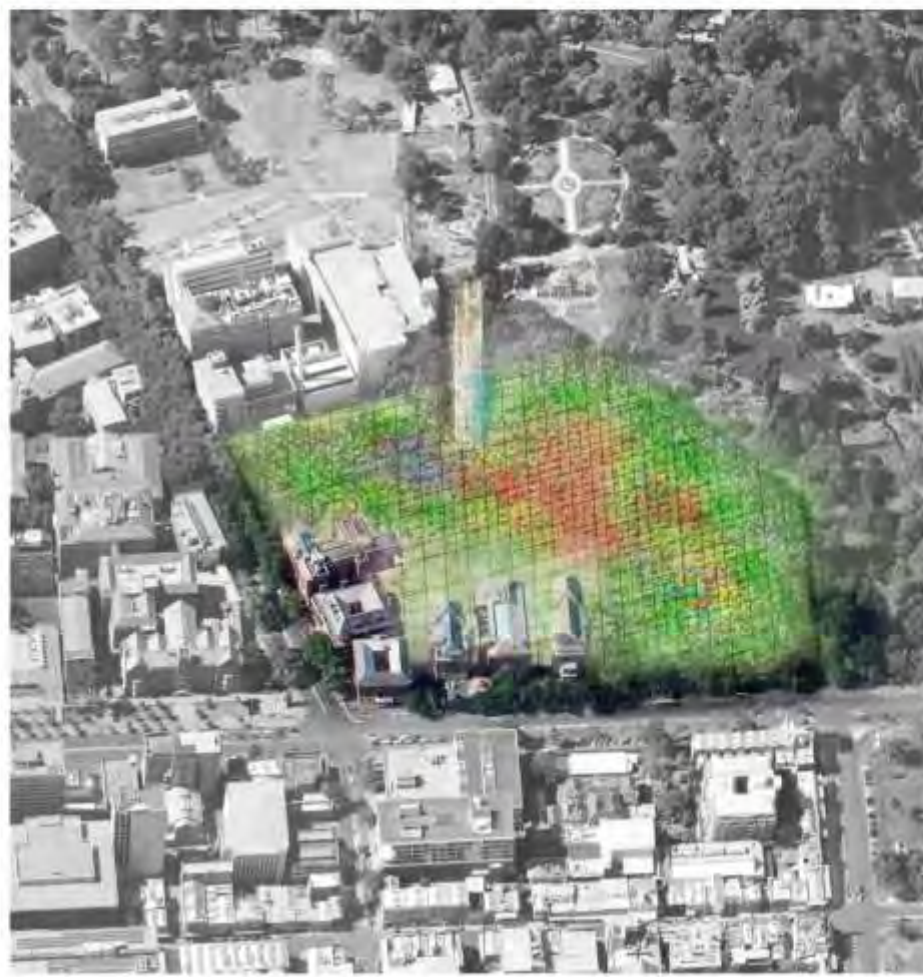




NORTH TERRACE ELEVATION 1:1000



**RESUME**  
Principal idea:

The first question that the architectural competition asks us is: which are the mistakes that are already built?  
Demolish is therefore a creative decision.  
This place is saturated with architectural objects that were useful and are now obsolete.  
This place is a space receptive to be a transition in the entire urban environment, which includes the Botanical Garden and the University.  
We will not make the arrogant mistake of believing that a project will address, from its inauguration and forever, the issues raised here.  
We propose, rather than a project, a progressive process but with reversible routes. The lighting, signage and urban information, shall be constructed lifted into the ground with a detachable and retrievable process technology. It is the essential grid that balances out the urban space as a large Mandala.

This place would be a hinge between the botanical garden, the cosmopolitan and the care area.

We will maximize the condition of the ultralight-technology and hierarchy between the quality of furniture and property, whereby the program is equipped.  
Once the mistakes have been identified and the demolitions made, we will contemplate a field cleared of obsolete objects in which the trees, immersed before in the landscape of architecture, are now the protagonists.  
We will pleasantly contemplate that place, covered softly with trees and plowed with demolished buildings lines.  
The first action will be essentially ecological. A capturing system of CO2 and CO and artificial shading.  
Then, we will proceed to overlay layers that sequentially, will generate the necessary protection to the activities, more or less consolidated. In a process to increment benefits towards the site usability.  
We propose an aesthetics based on the beauty of the intermediate conditions of the construction.

CONCURSO INTERNACIONAL  
INTERNATIONAL COMPETITION

REAL HOSPITAL EN ADELAIDA AUSTRALIA  
ROYAL HOSPITAL IN THE CITY OF ADELAIDA

2012

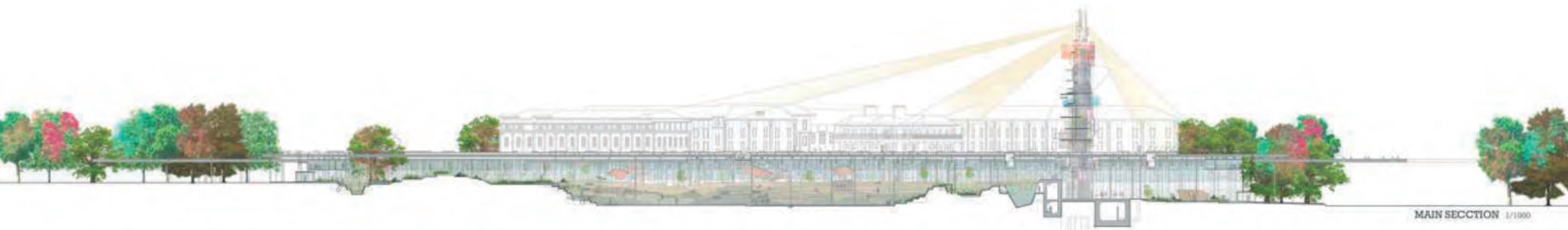
ANDRÉS PEREA ORTEGA ARQUITECTO

C/ Pintor Ribera nº22, 28016, Madrid SPAIN

+34 91 519 37 02  
+34 91 413 69 84  
aperea@pribera.com

UTE. Francisco Javier Valladares





MAIN SECTION 1/1000



This proposal is a project of projects. It is a strategy to advance a long strategy of interaction between citizens and the changing supply place.

Advanced anthropology distinguishes between the symbol and the object in the market supply. When the market sees the citizen as a consumer, it gives symbols to which citizens can only watch passively. When it considers citizens as users it gives them objects to interact, appropriating them cultural and even materialy.

Our proposal is anthropologically objetual, a true tool for public use.

This board shows the transition from the initial geometric mesh to the intermediate states, with which the place is equipped and constructed.

A removable lightweight structure, 100% recoverable, nurtus a process of subsequent coverage, shading, lighting installation media, signage, posters, etc. in a first stage.

Covering for protection from rain, glass flat panels for natural ventilation playable on functionally specialized spaces (auditorium, exhibitions) on: allocation of obscuration and enclosures, HVAC etc. Finally, thermal and / or solar PV paneling endowment.

In the floor plane, performance is even softer. Practically, only earth-moving and mobile equipment for kiosks, displays that mark areas for workshops of all kinds, light platforms for dancing, shows, etc.

The topography is modeled by creating an idyllic landscape on which the vegetation and its perfumes, water and filtered rumors, will generate an atmosphere not only peaceful but a comfortable and therapeutic space for citizenship.

CONCURSO INTERNACIONAL  
INTERNATIONAL COMPETITION

REAL HOSPITAL EN ADELAIDA AUSTRALIA

ROYAL HOSPITAL IN THE CITY OF ADELAIDA

2012

ANDRÉS PEREA ORTEGA ARQUITECTO

C/ Pintor Ribera nº22, 28016, Madrid SPAIN

+34 91 519 37 02  
+34 91 413 69 84  
aperea@pribera.com

UTE. Francisco Javier Valladares